

### MAHÉ 36 - REPLACEMENT RUDDER BEARINGS - LOWER

**MATERIAL:** Vesconite      **Water Swell:** 0.07%

**Type:** Self Aligning Spherical Rudder Bearing (Clearance I.D. & O.D.)

**Rudder Stock Dia:** 34.000 mm  
**Bearing Housing Dia:** 64.000 mm  
**Bearing Length:** 40.000 mm

**Water Swell Reference**  
Vesconite 0.07%  
Ertalyte 0.07%  
Nylon 3.00%

**Water Swell:** (Approx 50% ID / OD)

**I.D.:** 0.012 mm  
**O.D.:** 0.022 mm  
**Length:** 0.028 mm

**Machining Tolerances** = +/- 0.1% Bearing Dia (+/-0.025 mm Min)

**I.D.:** 0.034 mm  
**O.D.:** 0.064 mm

**Assembly Clearance** = 0.2 mm + 0.0015 x (shaft dia)

**I.D.:** 0.251 mm  
**O.D.:** 0.296 mm

**Bearing Dimensions**

**I.D.:** 34.30 mm  
**O.D.:** 63.62 mm  
**Length:** 39.97 mm

**Initial Clearance**

**I.D.:** 0.297 mm  
**O.D.:** 0.382 mm

**Clearance after Swell**

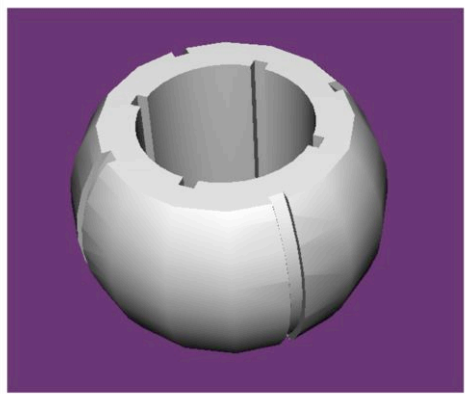
**I.D.:** 0.285 mm  
**O.D.:** 0.360 mm  
**SUM:** 0.645 mm

**Axial Water Grooves**

**Size:** 3mm x 3mm  
4 x O.D. 0, 90, 180, 270  
4 x I.D. 45, 135, 225, 315

#### **Notes on grooves for marine bearings**

Although Vesconite rudder bearings generally do not need water circulation grooves, they are highly recommended to enhance the life of rudder bearings, provided there is sufficient wall thickness to accommodate axial grooves. The same number of grooves and dimensions can be used for rudder bearings as for stern tube bearings



**New Bearing: JP3 - Mahé**

**Use:** Lower Rudder bearing

**Material:** Vesconite

**Dimensions:**

**I.D.:** 34.30 mm  
**O.D.:** 63.62 mm  
**Length:** 39.97 mm

**Axial Water Grooves:**

**Dimensions:** 3mm x 3mm  
**I.D. No.:** 4 (0°-90°-180°-270°)  
**O.D. No.:** 4 (45°-135°-225°-315°)

## MAHÉ 36 - REPLACEMENT RUDDER BEARINGS - LOWER

### Existing JP3 Bearing Data

PART No.: JP3 CE 10. 14. 04. 388. 06 Material: Ertalyle

Type: 1 Housing: 14 Max Stock Dia: 40MM

JP3 bearing designations all follow a common format:

The first two numbers refer to the bearing type, in this case **type 1**

The second numbers to the housing style and/or roller number

The last two to the maximum stock diameter in centimeters. I.e. .10.XX.09 will be a 90mm.

10.XX.XX  
Housing Style Bearing Size

Rep.	Nbre	Désignation
1	1	rudder stock
2	1	upper bearing 10.13.xx jxx
3	1	Lenticular quadrant Rxx
4	1	key
5	1	retaining ring
6	1	screw
7	1	washer tube
8	1	rudder tube
9	1	lower bearing 10.14.xx jxx
10	1	washer
11	4	pin
12	1	pin
13	1	emergency tiller

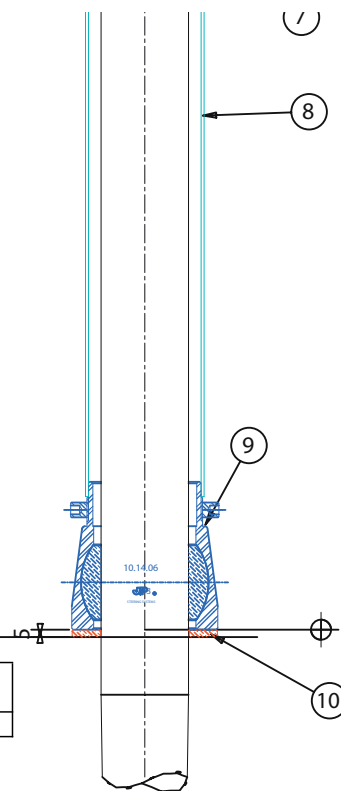
#### TYPE 10.14.XX



This bearing is designed for use in production boats. The outer surface is the bearing is tapered for installation in a matching tapered recess.

The bearing can only be used a lower bearing.  
Upper side of the bearing is machined to match the rudder tube.

Bearing Reference*	Minimum Stock Diameter mm	Maximum Stock Diameter mm	Radial SWL** kg
10.XX.04	35	44	1100-1925



LOWER RUDDER BEARING

LOCKING RING

LOWER RUDDER BEARING

10.14.XX

APPLY BEAD OF MARINE SEALANT  
TO CORNER OF BEARING AT FINAL  
ASSEMBLY

BEARING SUPPORT LAMINATE  
REFER TO DESIGNERS SPECIFICATIONS

WASHER

JP3  
STEERING SYSTEMS

Le Bout des Barques BP54  
17230 MARANS - FRANCE  
Tel: 33 (0)5 46 35 10 78  
Fax: 33 (0)5 46 35 10 93

Plan N°:

CAD:

Ce document est notre propriété, il ne peut être reproduit ou communiqué, même partiellement, sans notre autorisation

TYPICAL TYPE 1 BEARING INSTALLATION  
HALF RUDDER TUBE & 10.14.XX BEARING

application

Dessiné par :  
T-S

Dessiné le :  
11 MAR 08

