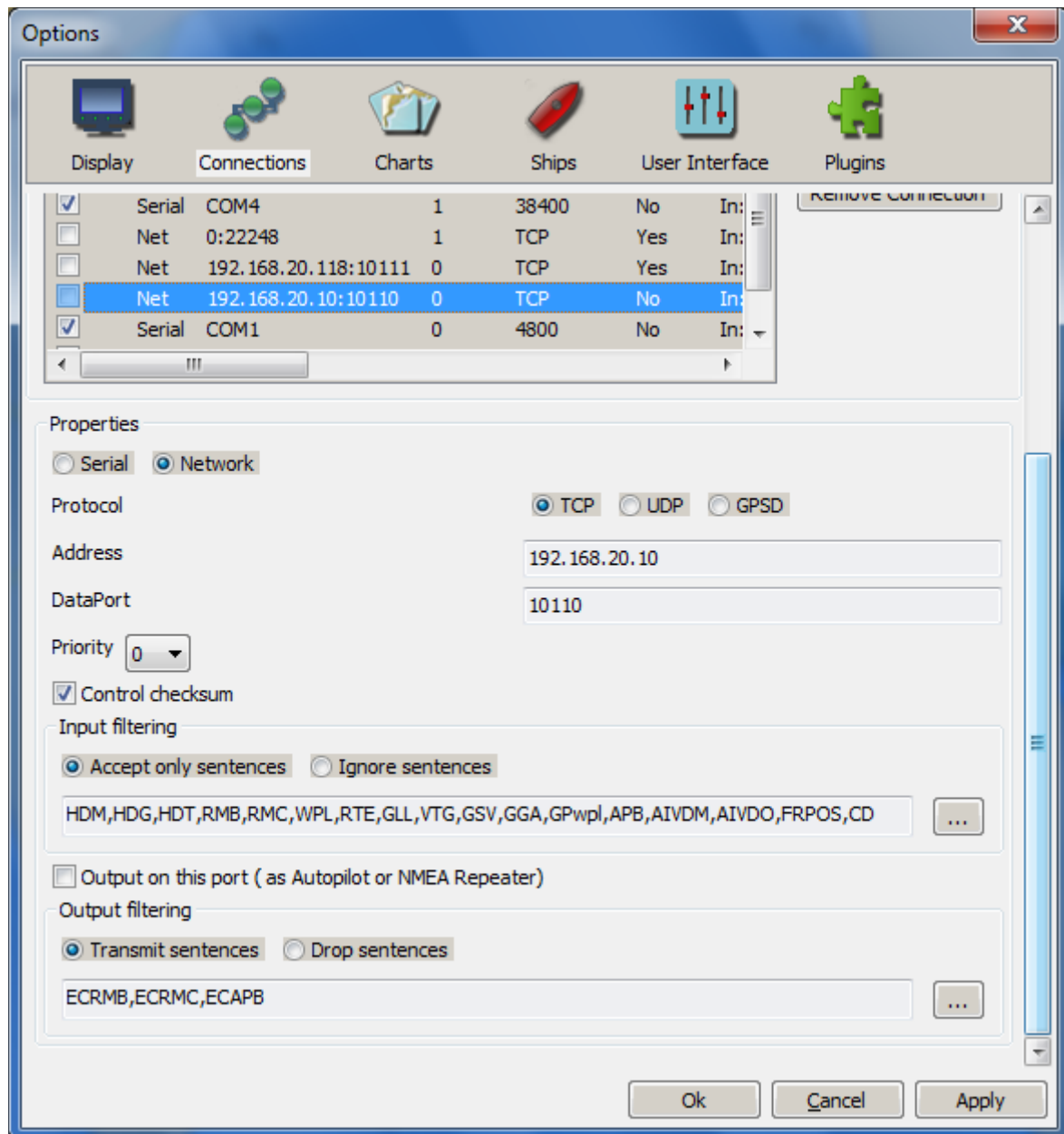
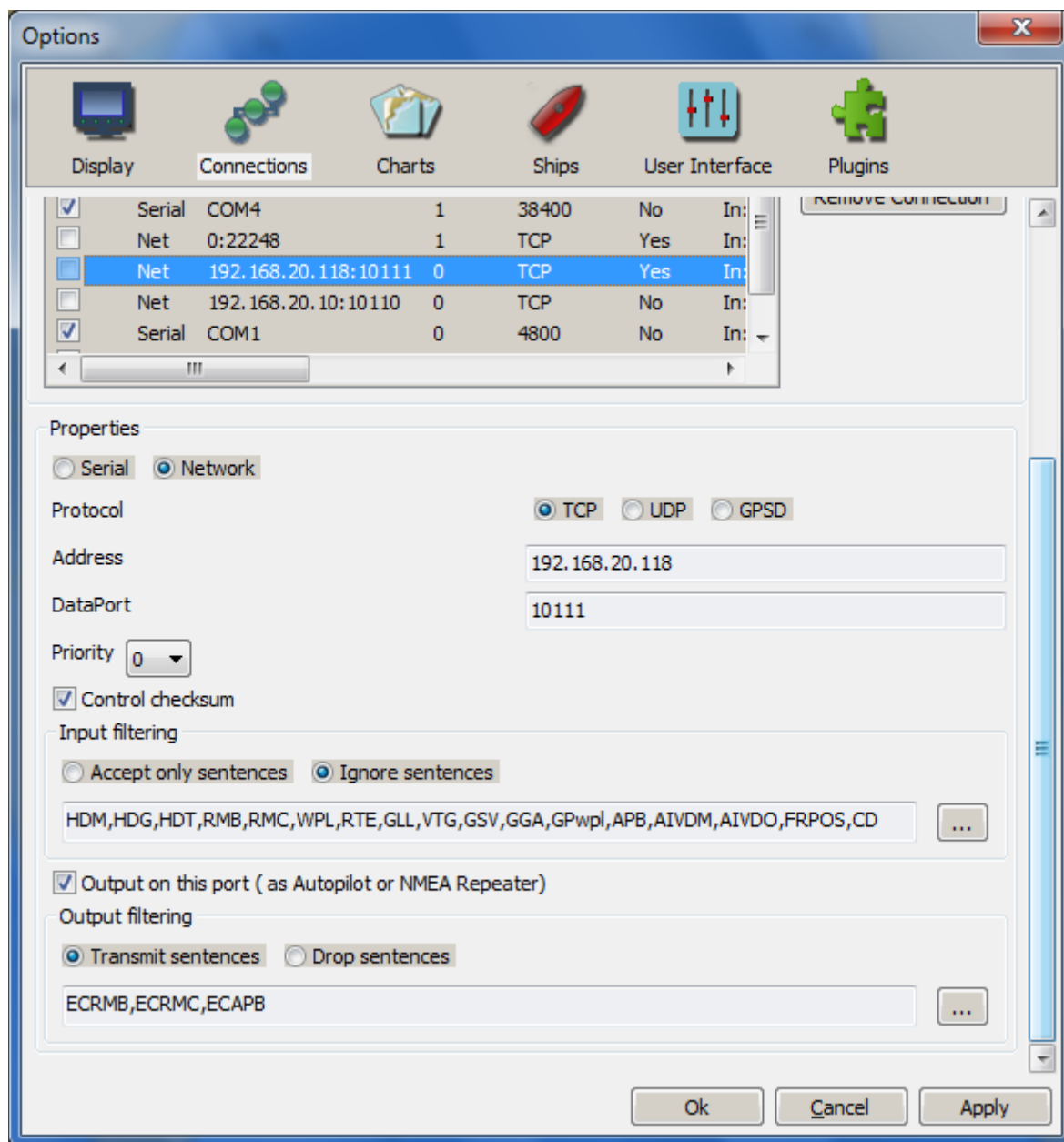


The Input Connection from the router...



& the Output Connection to the router...



I'm sure there's stuff in there that doesn't need to be, like a lot of the filtering. When I did this I was simply trying to remove everything extraneous, when it worked I left it all alone. Also note that the IP address of the output connection is that of the laptop running OCPN, the input connection is to my router's IP address.

For interest, the connection defined as 0:22248 is used to feed GPS data to ActiveCaptain's Companion product running on the PC. You can't redefine the port in that product as it assumes you are using PolarNavy to distribute GPS data.