

## 3.5 «AIS»

### 3.5.1. Display Filters

#### 3.5.1.1 Range

AIS targets outside the specified range are filtered from the chart display.

#### 3.5.1.2 Track

"Track" specifies the length of AIS target tracks in minutes.

#### 3.5.1.3 All Targets Active

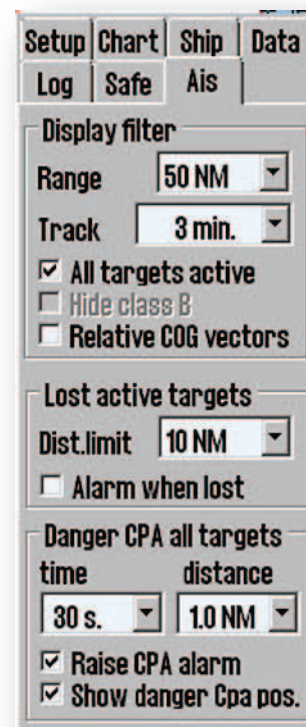
Enables display of all AIS targets with courses COG-vector and tracks. In INT 1 chart presentation can also be seen the vessel's name.

#### 3.5.1.4 Hide class B

"Hide class B" option activated removes the display of all Class B AIS targets in the charts.

#### 3.5.1.5 Relative Course (COG) Vectors

"Relative Course Vector" option makes all AIS targets COG vectors relative to your vessel's movement. AIS target COG vectors have a true course if this option is not selected.



### 3.5.2 Lost Active Targets

AIS targets within the range specified in the "Area" field is marked with a black cross "+" "when the target data ends. If "Alarm when lost" is enabled, this will also provide an alarm.

### 3.5.3 Danger CPA all Targets

AIS targets which are within the range specified in the "Distance" field, from own vessel's future position and within a time frame specified in the "Time" field, are starting a "Ship CPA" alarm.

"Enabling CPA alarm" is always selected and cannot be changed by the operator. A qualified electrician can set up TECDIS making possible for the operator to clear the "Enable CPA alarm" tick. If "Enable CPA alarm" tick is removed, a warning message is always displayed in the lower right corner of the chart. This mode can be used when navigating in confined waters where additional CPA alarm is triggered very often.

If "Show Dangerous CPA pos." is selected, there are displayed continuously graphic symbols for all dangerous AIS targets. Hazardous targets are shown on the chart, regardless of AIS / ARPA functions settings, and they appear in red until the danger situation is cleared. When "Show Dangerous CPA pos." is selected, the CPA is continuously displayed with a small green circle on its course vector and with a little green square on a crossing vessel's heading vector.

If TECDIS loses the signal from a vessel that have an active CPA alarm, a new alarm will be activated: "Lost CPA" alarm (a "dangerous" vessel has disappeared from the system).

For further description of ARPA and AIS functionality see section 6.4 and 6.5.

