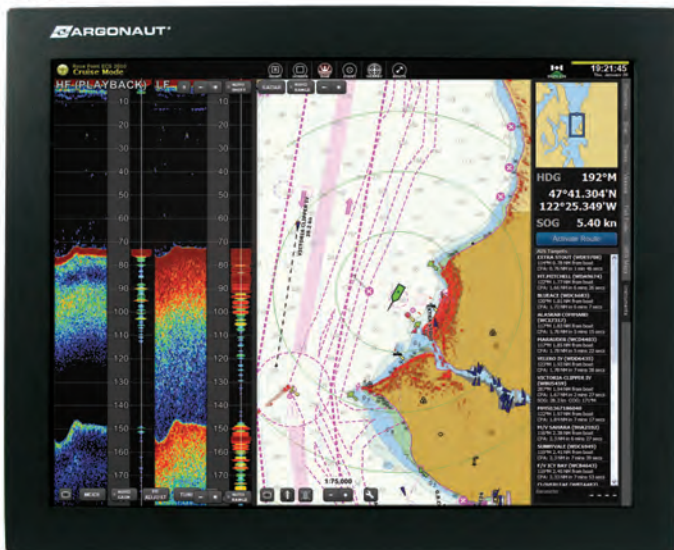


## New G7 Series 17" & 19" LED Marine Monitors, Starting At \$2,499! Sleek Design, Optically Bonded, High Brightness Tflex LED LCD!

G717



G719



Remote Wired OSD Control

- 17" & 19" High Bright Tflex LED LCD
- Precision Optical Bond Technology
- Lowest Power Consumption In Class
- High SXGA Native Resolution
- Dual Input VGA & DVI
- Wide Range Dim To Black Control
- High 50000 : 1 Contrast Ratio
- Sealed Nema 4X Front Bezel
- Remote OSD Control Reduces Size
- Low Profile Glass Bridge Look
- Black Box Electronics or Computer

### **Tflex™** G7 Series

Argonaut's new G7 series 17" and 19" marine monitors bring you high end glass bridge sophistication at the industry's greatest value! State of the art LED backlighting and precision optical bond, consume less power, produce less heat yet offer brilliant sunlight readability!

Dual input VGA & DVI plus wide range dimming control make these displays ideal for large format navigation, radar and other marine applications. The sleek, black powder coated aluminum front bezel is waterproof and sits only 1/8" above your surface flush mount installation! The small footprint is designed for tight spots to maximize your choices. On screen display button control can be remote mounted in any location (within 10 feet), and overall monitor thickness of just 2.44" is the best in its class to enhance your installation options.

Argonaut is the oldest established marine monitor manufacturer and has led the industry in product innovation, reliability, performance and value since 1995. Our new G7 series products are built with field proven components used in thousands of installations worldwide.

For mega yacht style, rugged performance and attractive value, the all new Argonaut G7 leads the way.

# Specifications

## G717XL 17"

## G719XL 19"

### Rugged Features

Enclosure/Finish	Aluminum Bezel/Black Powder Coated	Aluminum Bezel/Black Powder Coated
LCD	Optically Bonded 3mm Antireflective Glass	Optically Bonded 3mm Antireflective Glass

### General Features

Display Type	TFT Active Matrix Tflex™ LCD With LED Backlight; 17"	TFT Active Matrix Tflex™ LCD With LED Backlight; 19"
	Diagonal; Optically Bonded, Sunlight Readable	Diagonal; Optically Bonded, Sunlight Readable
Display Area	17" Diagonal	19" Diagonal
Sunlight Brightness	1200+ cd/m2 <sup>1</sup>	1200+ cd/m2 <sup>1</sup>
Ambient Backlight Brightness	700 cd/m2 (typ)	700 cd/m2 (typ)
Response Time	5ms	5ms
Viewing Angle	Horizontal: 160 Degrees; Vertical: 160 Degrees	Horizontal: 170 Degrees; Vertical: 160 Degrees
Contrast Ratio (Max.)	50000 : 1 (ASCR)	50000 : 1 (ASCR)
Scanning Frequency	Horizontal: 30K~82KHz; Vertical: 56~76Hz	Horizontal: 30K~82KHz; Vertical: 56~76Hz
Pixel Pitch	0.264mm	0.294mm
Maximum Resolution	SXGA 1280 x 1024	SXGA 1280 x 1024
Color	16.7 Million	16.7 Million
Dual Signal Input	D-Sub VGA, DVI-D	D-Sub VGA, DVI-D
Connectors	Standard VGA, DVI-D, Grounded A/C Power.	Standard VGA, DVI-D, Grounded A/C Power.
Power Source	100-240 Volt AC	100-240 Volt AC
User Control OSD Function	Hard Wired Remote OSD Button Control module With 10' cable. Power, Brightness (Dim To Black), Multiple OSD Adjustments/Functions.	Hard Wired Remote OSD Button Control module With 10' cable. Power, Brightness (Dim To Black), Multiple OSD Adjustments/Functions.
Operating Temperature	-10 - 40°C	-10 - 40°C
Water/Corrosion Resistance	NEMA 4X Front Bezel, Internal VCI Corrosion Protection	NEMA 4X Front Bezel, Internal VCI Corrosion Protection
Dimensions (W x H x D)	15.894" x 13.350" x .125" (Bezel Only), Add 2.315" For Rear Pod Cover	17.470" x 14.610" x .125" (Bezel only) Add 2.315" for rear pod cover
Weight	10lbs	11lbs
Mounting Options	Flush Mount	Flush Mount
Options/Accessories	Touch Screen Easy Pass VGA Extension Cabling	Touch Screen Easy Pass VGA Extension Cabling

Brightness equivalent in Direct sun. The specifications and pictures are subject to change without notice.

All brand names are registered trademarks of their respective owners.