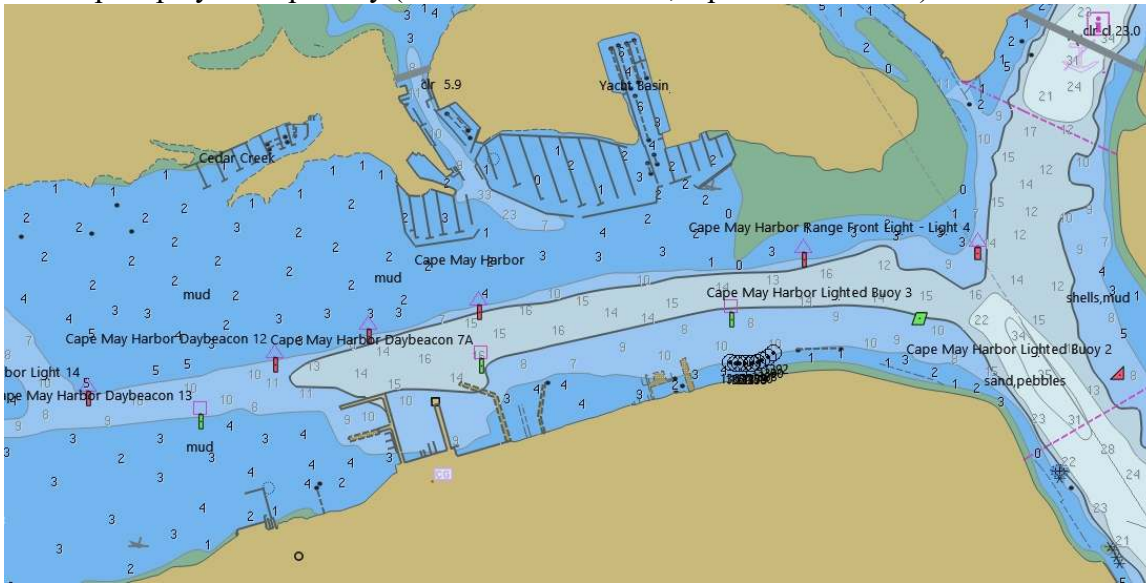


Desktop display of Cape May (Win10 to latest level, OpenCPN at 4.8.0)



Laptop display of Cape May, no light labels



Desktop Settings

Options

Display Charts Connections Ships User Interface Plugins

Chart Files Vector Chart Display Chart Groups Tides & Currents Chart Downloader

Display Category: Mariner's Standard

Display: Depth Soundings
 Chart Information Objects

Buoys/Lights: Buoy/Light Labels
 Light Descriptions
 Extended Light Sectors

Chart Texts: National text on chart
 Important Text Only
 De-Cluttered Text

Chart Detail: Reduced Detail at Small Scale

Graphics Style: Simplified
Boundaries: Plain
Colors: 4 Color

Shallow Depth: 5.00 feet
Safety Depth: 6.00 feet
Deep Depth: 12.00 feet

CM93 Detail Level: -5 0 5

Mariner's Standard

- Administration area (Named)
- Airport / airfield
- Anchor berth
- Anchor
- Anchorage area
- Beacon cardinal
- Beacon isolated danger
- Beacon lateral
- Beacon safe water
- Beacon special purpose/general
- Berth
- Bridge
- Building single
- Building religious
- Built-up area
- Buoy cardinal
- Buoy installation
- Buoy isolated danger
- Buoy lateral
- Buoy safe water
- Buoy special purpose/general
- Cable area
- Cable overhead
- Cable submarine
- Canal
- Canal bank
- Cargo transshipment area
- Causeway
- Caution area
- Chain/Wire
- Checkpoint
- Coastguard station
- Coastline
- Contiguous zone
- Continental shelf area

Select All Clear All

Reset to STANDARD

OK Cancel Apply

Laptop settings

Options

Display Charts Connections Ships User Interface Plugins

Chart Files Vector Chart Display Chart Groups Tides & Currents Chart Downloader

Display Category: Mariner's Standard

Display: Depth Soundings
 Chart Information Objects

Buoys/Lights: Buoy/Light Labels
 Light Descriptions
 Extended Light Sectors

Chart Texts: National text on chart
 Important Text Only
 De-Cluttered Text

Chart Detail: Reduced Detail at Small Scale

Graphics Style: Simplified
Boundaries: Plain
Colors: 4 Color

Shallow Depth: 5.00 feet
Safety Depth: 6.00 feet
Deep Depth: 12.00 feet

CM93 Detail Level: -5 0 5

Mariner's Standard

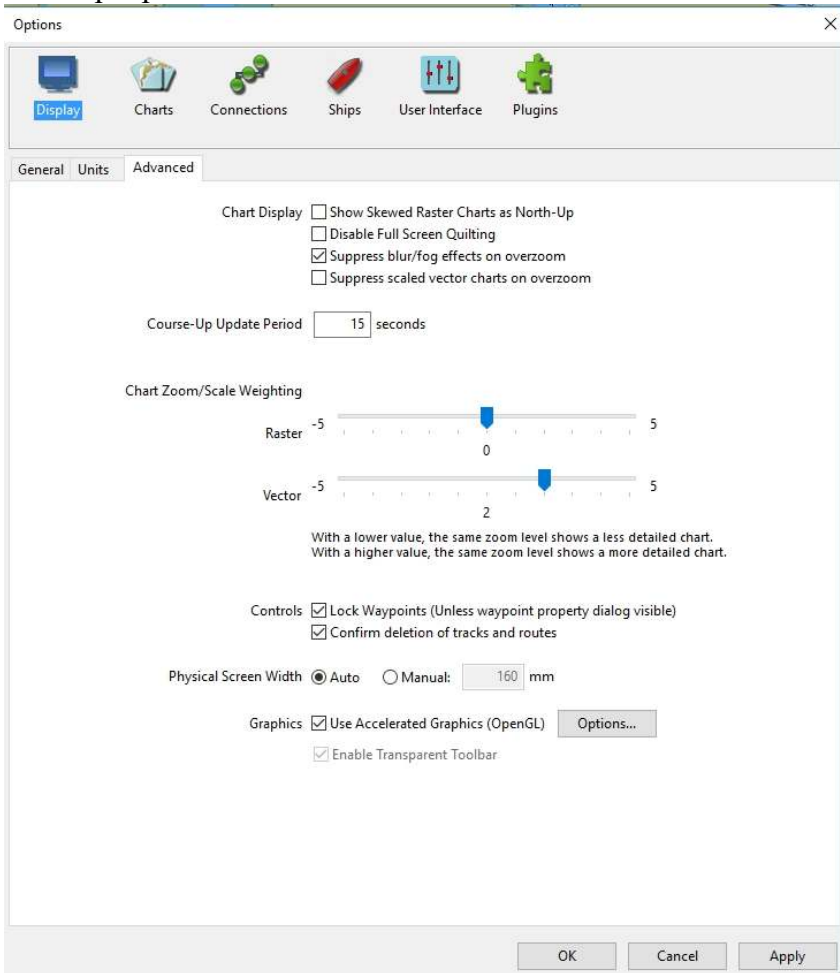
- Administration area (Named)
- Airport / airfield
- Anchor berth
- Anchor
- Anchorage area
- Beacon cardinal
- Beacon isolated danger
- Beacon lateral
- Beacon safe water
- Beacon special purpose/general
- Berth
- Bridge
- Building single
- Building religious
- Built-up area
- Buoy cardinal
- Buoy installation
- Buoy isolated danger
- Buoy lateral
- Buoy safe water
- Buoy special purpose/general
- Cable area
- Cable overhead
- Cable submarine

Select All Clear All

Reset to STANDARD

OK Cancel Apply

Desktop Options



Laptop Options

