

OpenCPN 4.4.0 on Win7, watchdog_pi-1.9.50-win32 release one

Test with only one single Watchdog boundary alarm set

- A. "GPS course crosses boundary" NOT tested
- B. "GPS fix < XXXX" for each type of boundary and every setup and permutation of boundary's type/state tested OK
- C. "Inclusion Alarm" for each type of boundary tested OK. Copy/paste or "Get" of GUID is working. Boundary Type/State parameters are not treated as a set of condition parameters for the Inclusion Alarm.
- D. "AIS Guard Zone" for each type of boundary tested OK. Copy/paste of GUID is working. Boundary Type/State parameters are not treated as a set of condition parameters for the Alarm. Alarm will be triggered whenever an AIS is within the geographical boundary path.
- E. Alarm Action i.e Sound, Command, Message Box, Repeat, Auto Reset, Graph, Test works OK (only tested for a few GPS and AIS guard Zone alarm though)

Edit Alarm

Exclusion Alarms

☐ GPS course crosses boundary in < minutes

☐ GPS fix is < nm from boundary (any direction)

Boundary Type

☒ Any ☐ Exclusion ☐ Inclusion ☐ Neither

Boundary State

☒ Any ☐ Active ☐ Inactive

☐ Inclusion Alarm Boundary GUID

☒ AIS Guard Zone Guard Zone GUID

Check Frequency (Secs) 120
(Note: not Guard Zone)

Graphical overlay for GPS fix displays line from boat to location of the point in the found boundary

Alarm Action

☒ Sound


☐ Command

☒ Message Box

☐ Repeat Alarm after seconds

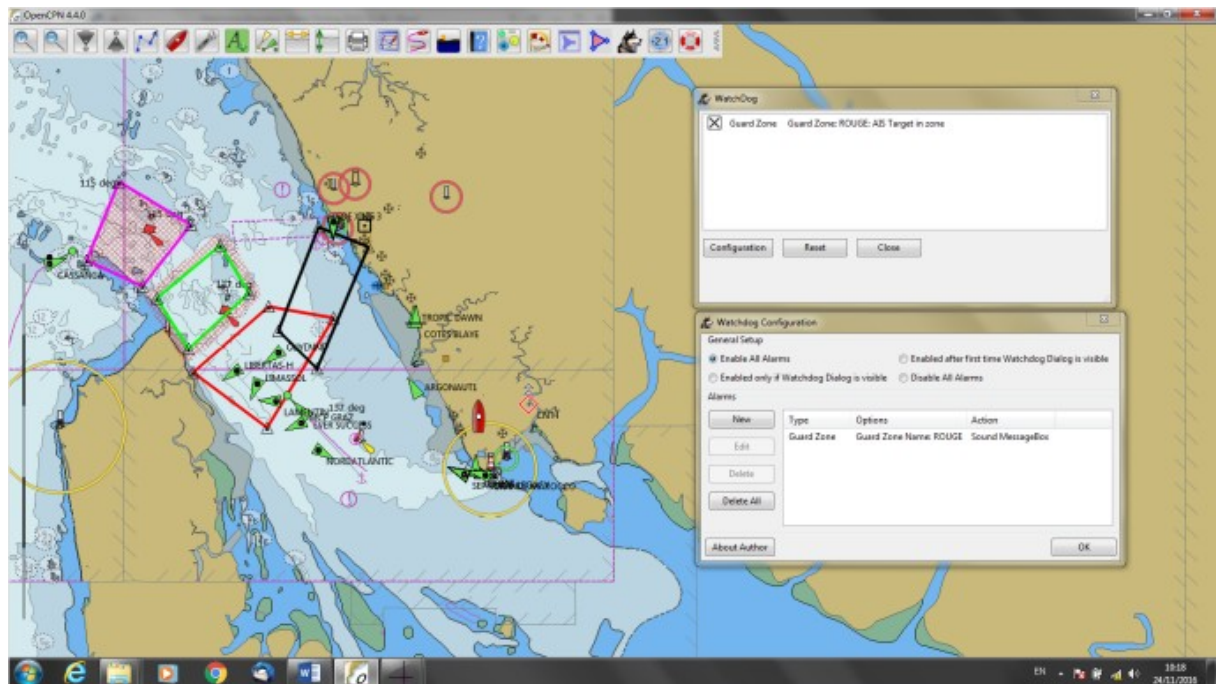
☐ Automatically Reset ☐ Graphics Enabled

Watchman

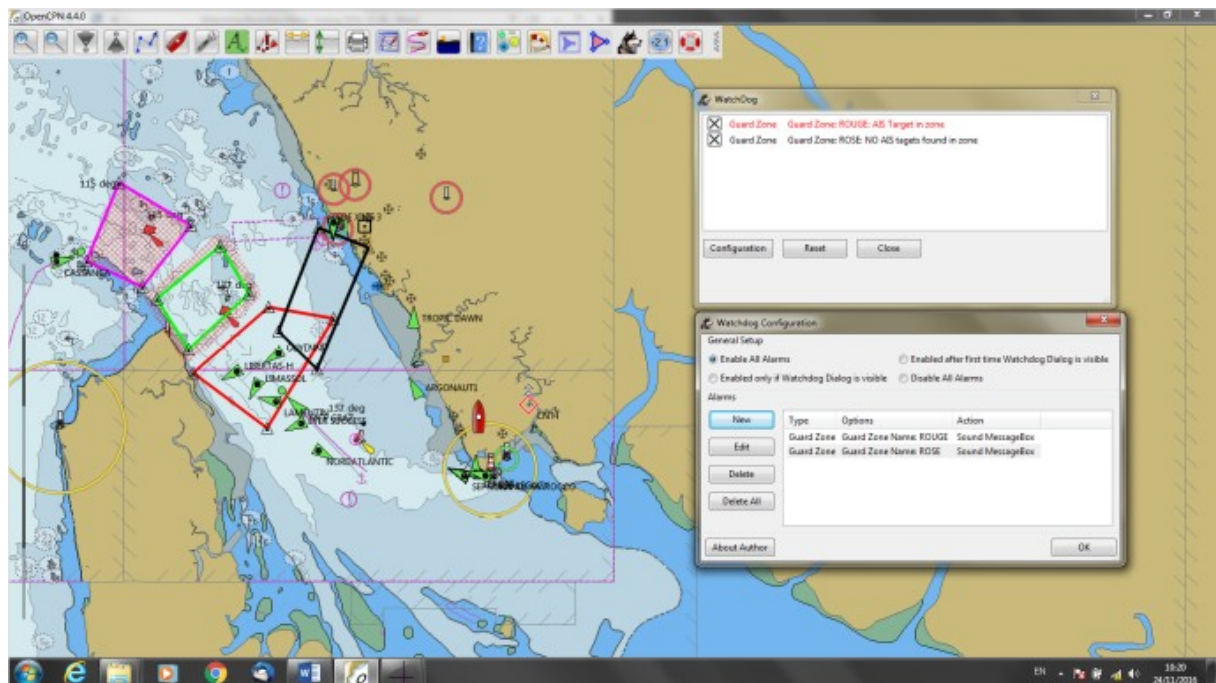
 Guard Zone ALARM!
Guard Zone Name: ROUGE
Description:
GUID: 1c610000-14e2-462e-b487-407c32660000
Ship Name: ECO NICAL
Ship MMSI: 538006688

Test with two Watchdog boundary alarms set

Set AIS guard zone alarm ROUGE (1st line in Watchdog main window and configuration window with GUID ROUGE)

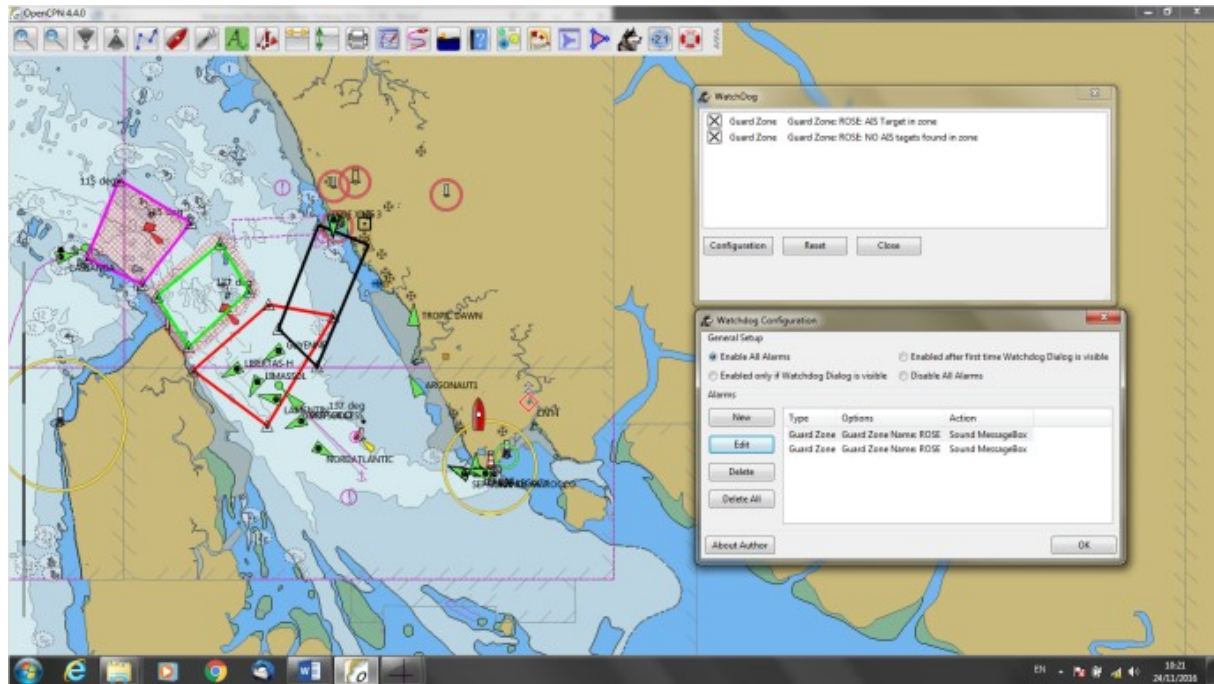


Set AIS guard zone alarm ROSE (2nd line in Watchdog main window and configuration window with GUID ROSE)



Edit AIS guard zone alarm ROSE. When closing "Edit Alarm" window, the two guard zones are indicated in the main window and configuration window with the same GUID ROSE

->discrepancy in the naming/presentation in the Watchdog main window and configuration window



When first AIS Guard zone alarm is triggered the GUID reverts to ROUGE

->alarm condition parameters seem correct.

->discrepancy in the naming/presentation in the Watchdog configuration window

