

The Pin positions 4 and 5 on Port 1 are not used for the NMEA 0183 default option. They come into play with the NMEA 2000 and SeaTalk NG Port 1 options.

The required Bits Per Second rates must be set on the Communication Ports, e.g. Most NMEA 0183 instrument rates are 4800, Most AIS Receivers use 38,400, etc.

Note that only one program at one time can use the PC's COM ports. The NavMonPC program, however, provides 6 virtual COM ports that can be used by multiple programs at the same time.

The Boat Battery cable Yellow lead is connected to a +12VDC power source and the Black lead to -12VDC. The Marine-PC has a protection diode in the power circuit, but please observe this polarity.

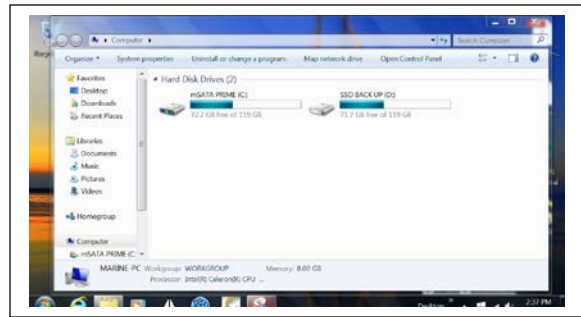
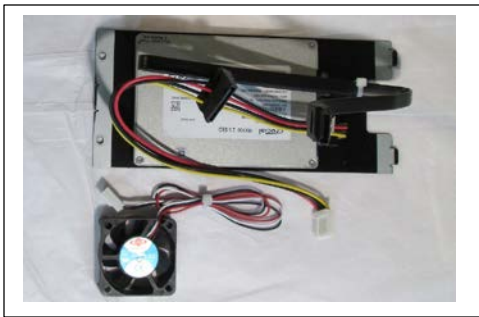
The 12VDC Power Out Plug can be used to connect 12VDC Monitors. A 48-inch cable is provided that can be field connected to the Power Out Plug, black/gray lead to + and black lead to -. A second 10-inch monitor power cable can be paralleled for a second monitor. NavAssist has an 8 inch, sunlight readable, waterproof, touchscreen monitor available for operation at the helm.

Summary

The ***NavAssist*** Marine-PC system is meant to aid in the enjoyment and safe operation of your boat. It cannot replace the knowledge, awareness, or responsibility of the Captain.

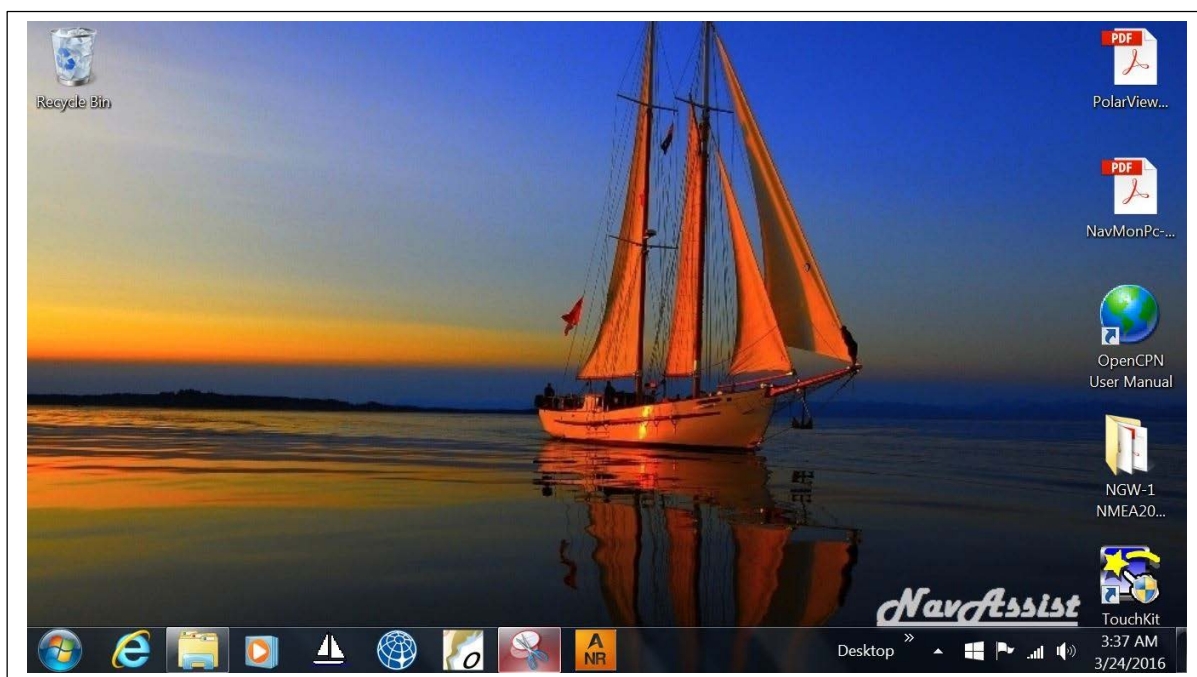
Thank you for purchasing the ***NavAssist*** Marine-PC!

Marine-PC Quick Start 1101 Back Up SSD Storage Option Supplement



The 1101 Back Up SSD Option is fully prepared before shipment and requires no user action on first install. The Back Up Drive (D:) has the complete image of Drive (C:). The inclusion of this option can be verified with Start>Computer.

Marine-PC Quick Start NMEA2000 > NMEA0183 1105 Port 1 Interface Option Supplement



The NMEA2000>NMEA0183 Port 1 Option has installed the Actisense NGW-1-ISO NMEA 2000 Gateway, NMEA 2000 to 0183 (ISO), on a HDD Bracket within the Marine-PC Case. The 0183 ISO end is connected to the PC's COM 1. The NMEA 2000 end is connected internally to the 5 POS Marine I/O Port 1. The Actisense case and base are removed. The Actisense NMEA 2000 Cable is removed and fastened externally to a 5 Position plug with a flexible Tab to prevent stress on the 5 signal connections. The connections and removals are performed and verified under Actisense specification and the warranty applies.

The Marine-PC's COM1 is set at 4800 bps. The standard MS Windows Serial Port Driver is utilized. The Actisense NMEA Reader is installed and can be operated for testing the NMEA 2000 external connection on board your boat (left Click the A N R icon in the task bar). The User Manual and other documentation is available on the Desk Top in the NGW-1 NMEA2000 folder.